

## ACCESSORIES



For medifa Operating  
Table Systems



# Content

This brochure gives an overview of the complete accessory program for medifa operating table systems.

In addition to the complementary accessories for the operating table series MAT5000 BASIC, MAT5000 IV, MOT6000 III and MOT6000S I you will find accessories for nearly each medical application.

## MAT5000 I BASIC

- 501010
- 501020



## MOT6000 III

- 601120
- 601700
- 601820



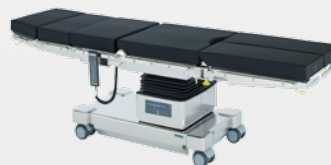
## MAT5000 IV

- 501130
- 501135
- 503220
- 503225
- 504220
- 504225
- 504320
- 504325
- 505220
- 505225
- 505320
- 505325



## MOT6000S I

- 603100
- 603200
- 603300



Accessories for MAT5000 I BASIC	04	
Accessories for MAT5000 IV and MOT6000 III	09	
Accessories for MOT6000S I	18	
General accessories	27	
Head positioning	37	
Arm positioning	42	
Leg positioning	45	
Neurosurgery	52	
Orthopaedics and traumatology	54	
Positioning aids	62	

# Accessories for MAT5000 I BASIC



## Head rest

- Easy adjustment by means of gas spring
- Docking and undocking at back rest
- Radiolucent
- Detachable upholstery

Art.-no. 61148

L x W: 290 x 500 mm

Adjusting range: +45° / -45°

Upholstery: PUR, H = 40 mm

Electrically conductive

Suitable for: 501010, 501020



## Horseshoe shaped head rest

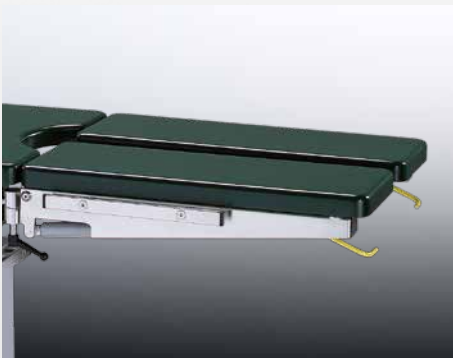
- One-piece
- Adjustable by ball joint

Art.-no. 61149

Upholstery: PUR

Electrically conductive

Suitable for: 501010, 501020



## Divided leg rest

- Easy adjustment by means of gas spring
- Docking and undocking at pelvis section
- Swivelling
- Radiolucent
- Detachable upholstery
- Pair

Art.-no. 61618

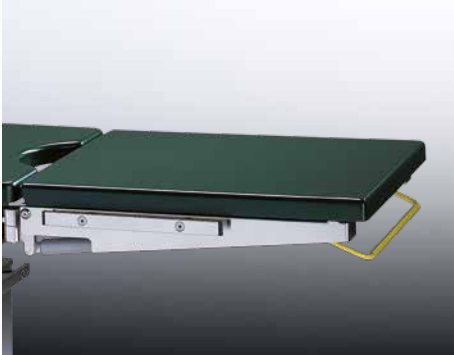
L x W: each 650 x 250 mm

Adjusting range: +20° / -90°

Upholstery: PUR, H = 40 mm

Electrically conductive

Suitable for: 501010, 501020



#### **Leg rest one-piece**

- Easy adjustment by means of gas spring
- Docking and undocking at pelvis section
- Radiolucent
- Detachable upholstery

Art.-no. 61628

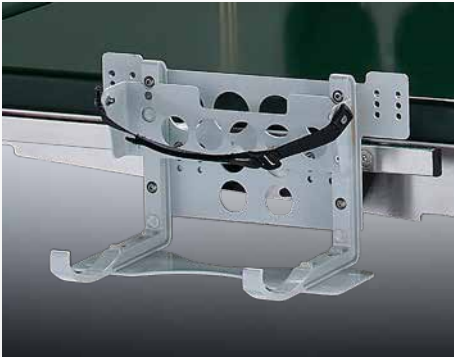
L x W: 620 x 540 mm

Adjusting range: +20° / -90°

Upholstery: PUR, H = 40 mm

Electrically conductive

Suitable for: 501010, 501020



#### **Carrier**

- For transport ventilation „Oxylog“

Art.-no. 61091

Attachment at side rail (EU)



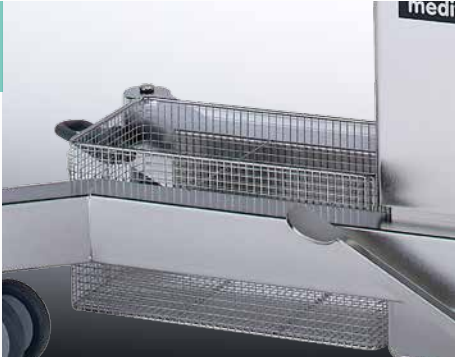
#### **Carrier**

- For oxygen bottles (2-3 l)

Art.-no. 61090

Attachment at side rail (EU)

# Accessories for MAT5000 I BASIC



## Filing basket

- For attachment at the base of operating table
- Incl. fixation

Art.-no. 61093

Suitable for: 501010, 501020



## Floor levelling feet

- Ensures optimal stability of operating table on uneven floors by means of height adjustable levelling feet
- Cannot be retrofitted!

Art.-no. 61094

Suitable for: 501010, 501020



## Radiographic cassette carrier

- To insert radiographic cassettes under table top of operating table
- With telescopic rod

Art.-no. 61645

L x W x H: 485 x 410 x 16 mm

Material: Stainless Steel

Suitable for: 501010, 501020



#### Instrument disposal

- Swivelling

#### Bowl with drainage and tube

- Swivelling



#### Transport box

- For safe transport of operating table

Available upon request!

Art.-no. 61088

L x W x H: 325 x 265 x 65 mm

Material: Stainless steel

Suitable for: 501010, 501020

Art.-no. 61089

L x W x H: 325 x 265 x 65 mm

Material: Stainless steel

Suitable for: 501010, 501020

Art.-no. 61095

L x W x H: 1200 x 800 x 952 mm

Material: Aluminium

Suitable for: 501010, 501020



# Accessories for MAT5000 I BASIC

## Accessory trolley

- For central storage of accessories
- Five slots for storage of upholstery segments
- Five side rails (25 x 10 mm) for storage of further accessories
- One shelf for storage of small accessories

Art.-no. 341045\_1

L x W x H: 765 x 700 x 1670 mm

Four double swivel castors  
(two with brake)

Suitable for: Upholstery segments  
of series MAT5000I BASIC as well as  
accessories for side rails (EU)





# Accessories for MAT5000 IV and MOT6000 III



## Head rest large

- Easy adjustment by means of gas spring
- Docking and undocking at back rest
- Radiolucent
- Alternatively also available with viscoelastic foam upholstery, H= 80 mm (Art.-no. 61144SF)

Art.-no. 61144

L x W: 285 x 495 mm

Adjusting range: +45° / -45°

Upholstery: PUR, H = 60 mm

Electrically conductive

Suitable for: All models of series  
MAT5000 IV and MOT6000 III



## Head rest large

- Easy adjustment by means of gas spring
- Double joint enables additional tilting
- Docking and undocking at back rest
- Radiolucent
- Alternatively also available with viscoelastic foam upholstery, H= 80 mm (Art.-no. 61146SF)

Art.-no. 61146

L x W: 285 x 495 mm

Adjusting range: +45° / -45°

Upholstery: PUR, H = 60 mm

Electrically conductive

Suitable for: All models of series  
MAT5000 IV and MOT6000 III



## Head rest small

- Easy adjustment by means of gas spring
- Docking and undocking at back rest
- Radiolucent
- Alternatively also available with viscoelastic foam upholstery, H= 80 mm (Art.-no. 61143SF)

Art.-no. 61143

L x W: 230 x 230 mm

Adjusting range: +45° / -45°

Upholstery: PUR, H = 60 mm

Electrically conductive

Suitable for: All models of series  
MAT5000 IV and MOT6000 III

# Accessories for MAT5000 IV and MOT6000 III



## Upper back rest

- Docking and undocking at lower back rest
- Radiolucent
- Integrated side rails (EU)
- Alternatively also available with viscoelastic foam upholstery, H= 80 mm (Art.-no. 61250SF)

Art.-no. 61250

Upholstery: PUR, H = 60 mm

Electrically conductive

Suitable for: 601700, 601820



## Kidney bridge

- Manual adjustable by hand crank
- Cannot be retrofitted!

Art.-no. 61655

Upholstery: PUR, H = 60 mm

Electrically conductive

Suitable for: All models of series MAT5000 IV and 601120



## Tripartite back rest

- Easy access to shoulder area by means of three detachable segments
- Docking and undocking at pelvis section (Reverse-Mode)
- Easy adjustment by means of gas spring
- Incl. head rest
- Alternatively also available with viscoelastic foam upholstery, H= 80 mm (Art.-no. 61385SF)

Art.-no. 61385

L x W: each segment 315 x 170 mm

Upholstery: PUR, H = 60 mm

Electrically conductive

Suitable for: All models of series MAT5000 IV and 601120



#### Tripartite back rest

- Easy access to shoulder area by means of three detachable segments
- Docking and undocking at lower back rest
- Incl. head rest
- Alternatively also available with viscoelastic foam upholsteries, H= 80 mm (Art.-no. 61390SF)

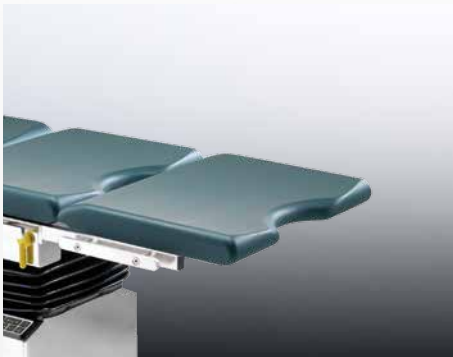
Art.-no. 61390

L x W: each segment 315 x 170 mm

Upholstery: PUR, H = 60 mm

Electrically conductive

Suitable for: 601700, 601820



#### Pelvis section extension

- Extension of pelvis section by 430 mm
- With cut-out
- Radiolucent
- Integrated side rails (EU)
- Alternatively also available with viscoelastic foam upholstery, H= 80 mm (Art.-no. 61125SF)

Art.-no. 61125

L x W: 430 x 540 mm

Upholstery: PUR, H = 60 mm

Electrically conductive

Suitable for: All models of series MAT5000 IV and MOT6000 III



#### Leg rest

- Adjustment by means of gas spring
- Docking and undocking at pelvis section
- Radiolucent
- Integrated side rails (EU)
- Alternatively also available with viscoelastic foam upholstery, H= 80 mm (Art.-no. 61625SF)

Art.-no. 61625

L x W: 670 x 540 mm

Adjusting range: +30° / -90°

Upholstery: PUR, H = 60 mm

Electrically conductive

Suitable for: All models of series MAT5000 IV and MOT6000 III

# Accessories for MAT5000 IV and MOT6000 III



## Divided leg rest

- Adjustment by means of gas spring
- Swivelling
- Docking and undocking at pelvis section
- Radiolucent
- Integrated side rails (EU)
- Pair
- Alternatively also available with viscoelastic foam upholstery, H= 80 mm (Art.-no. 61615SF)

Art.-no. 61615

L x W: each 730 x 250 mm

Adjusting range: +30° / -90°

Upholstery: PUR, H = 60 mm

Electrically conductive

Suitable for: All models of series MAT5000 IV and MOT6000 III



## Double divided leg rest

- Adjustment by means of gas spring
- Swivelling and bendable
- Docking and undocking at pelvis section
- Radiolucent
- Integrated side rails (EU)
- Pair
- Alternatively also available with viscoelastic foam upholstery, H= 80 mm (Art.-no. 61660SF)

Art.-no. 61660

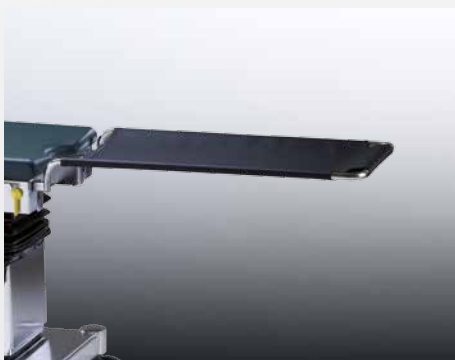
L x W: each 720 x 250 mm

Adjusting range: +30° / -90°

Upholstery: PUR, H = 60 mm

Electrically conductive

Suitable for: All models of series MAT5000 IV and MOT6000 III



## Transfer leg rest

- For short-time positioning of legs
- Docking and undocking at pelvis section

Art.-no. 61635

L x W: 900 x 500 mm

Suitable for: All models of series MAT5000 IV and MOT6000 III



#### **Paediatric surgery rest**

- Docking and undocking at pelvis section
- Deattachable upholstery
- Integrated side rails (EU)

Art.-no. 61633

L x W: 700 x 430 mm

Upholstery: Viscoelastic foam,  
H = 80 mm

Electrically conductive

Suitable for: All models of series  
MAT5000 IV and MOT6000 III



#### **Extension segments**

- Segments for extension of operating table's lying surface
- Integrated side rails (EU)
- Pair
- Alternatively also available with viscoelastic foam upholsteries, H= 80 mm (Art.-no. 61355SF)

Art.-no. 61355

L x W: each segment 310 x 105 mm

Upholstery: PUR, H = 60 mm

Electrically conductive

Suitable for: All models of series  
MAT5000 IV and MOT6000 III



#### **Foot switch**

- Additional control unit to adjust the main functions height, lateral and Trendelenburg movement
- Tethered
- Cannot be retrofitted!

Art.-no. 604060

Suitable for: All electric models of  
series MAT5000 IV and all models of  
series MOT6000 III

# Accessories for MAT5000 IV and MOT6000 III



## Infrared remote control

- Wireless data transfer
- Control panel for all electric functions of operating table
- Incl. charging station

Art.-no. 604070

Suitable for: All electric models of series MAT5000 IV and all models of series MOT6000 III



## Fifth castor

- For easier manoeuvrability and rotatability of operating table
- Cannot be retrofitted!

Art.-no. 50645

Suitable for: All models of series MAT5000 IV except 505220, 505225, 505320 und 505325



## Stabilization cylinder

- Extendible
- For optimal stability of operating table
- Cannot be retrofitted!

Art.-no. 50650

Suitable for: All models of series MOT6000 III



#### Manual back-up system

- Secures the operability of operating table in case of an electronic defect or breakdown of power supply
- Override of electronic functions by means of manual foot pedal
- Cannot be retrofitted!

Art.-no. 50655

Suitable for: All models of series  
MOT6000 III



#### Connecting bar

- Exchange of stainless steel connecting bar at back rest with a radiolucent connecting bar made of special plastic
- Improves radiolucency of back rest

Art.-no. 61670

Suitable for: All models of series  
MAT5000 IV and MOT6000 III



#### Universal adapter

- For attachment of a variety of head positioning accessories and neurosurgical accessories

Art.-no. 61100

Suitable for: All models of series  
MAT5000 IV and MOT6000 III



# Accessories for MAT5000 IV and MOT6000 III



## Radiographic cassette carrier

- To insert radiographic cassettes under table top of operating table
- With telescopic rod

Art.-no. 61640

L x W x H: 470 x 385 x 16 mm

Material: Stainless steel

Suitable for: All models of series MAT5000 IV and MOT6000 III



## Rinsing set

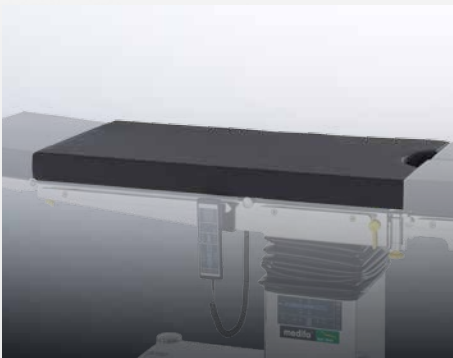
- Incl. bucket, basin, strainer, tube, undercarriage and fixation
- Docking and undocking at pelvis section

Art.-no. 61120

L x W x H (Basin): 325 x 265 x 65 mm

Volume (Bucket): 15 litre

Suitable for: All models of series MAT5000 IV and MOT6000 III



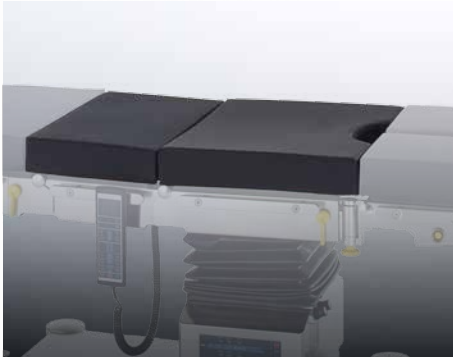
## Upholstery

- Alternative covering of lying surface with black viscoelastic foam comfort upholsteries
- With three different foam layers
- With memory effect
- For operating tables with one back section

Art.-no. 5000SF

H = 80 mm

Including:  
1 Upholstery for pelvis and back section



### Upholstery

- Alternative covering of lying surface with black viscoelastic foam comfort upholsteries
- With three different foam layers
- With memory effect
- For operating tables with two back sections

Art.-no. 6000SF

H = 80 mm

Including:

- 1 Upholstery for pelvis section
- 1 Upholstery for lower back section



### Accessory trolley

- For central storage of accessories
- Five slots for storage of upholstery segments
- Five side rails (25 x 10 mm) for storage of further accessories
- One shelf for storage of small accessories

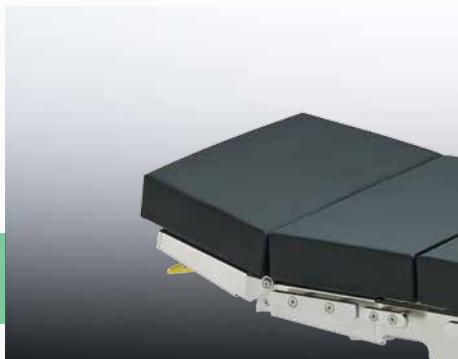
Art.-no. 341045\_2

L x W x H: 765 x 700 x 1670 mm

Four double swivel castors  
(two with brake)

Suitable for: Upholstery segments of series MAT5000 IV and MOT6000 III as well as accessories for side rails (EU)

# Accessories for MOT6000S I



## Head rest

- Easy adjustment by means of gas spring
- Docking and undocking at back rest
- Radiolucent
- Detachable upholstery enables easy cleaning and disinfection

Art.-no. 63144

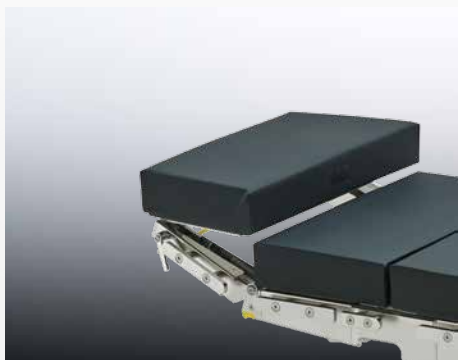
L x W: 266 x 550 mm

Adjusting range: -45° / +45°

Upholstery: Viscoelastic foam,  
H = 80 mm

Electrically conductive

Suitable for: 603100, 603200,  
603300



## Head rest

- Easy adjustment by means of gas spring
- Double joint enables additional tilting
- Docking and undocking at back rest
- Radiolucent
- Detachable upholstery enables easy cleaning and disinfection

Art.-no. 63146

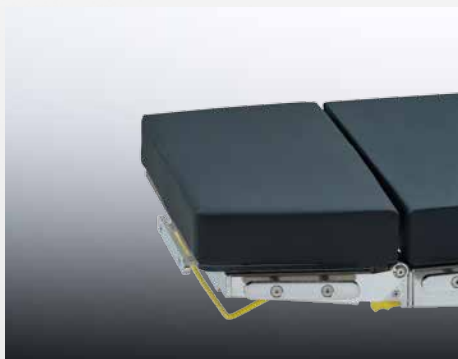
L x W: 266 x 550 mm

Adjusting range: -45° / +45°

Upholstery: Viscoelastic foam,  
H = 80 mm

Electrically conductive

Suitable for: 603100, 603200,  
603300



## Side rails at head rest

- Additional side rail at head-end of head rest
- Piece

Art.-no. 63148

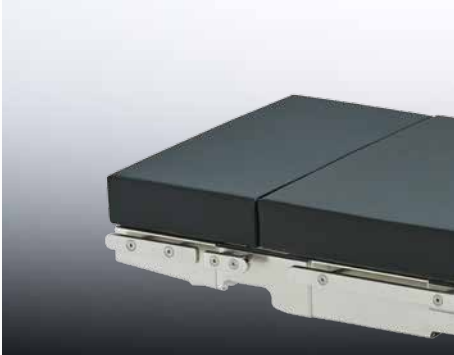
Suitable for: 63144, 63146

## Side rails at head rest

- Additional side rails at both sides of head rest
- Pair

Art.-no. 63149

Suitable for: 63144, 63146



#### Upper back rest

- Docking and undocking at lower back rest
- Radiolucent
- Detachable upholstery enables easy cleaning and disinfection
- Integrated side rails (EU)

Art.-no. 63250\_1

L x W: 268 x 550 mm

Adjusting range: -35° / +50

Upholstery: Viscoelastic foam,  
H = 80 mm

Electrically conductive

Suitable for: 603100



#### Upper back rest

- Docking and undocking at lower back rest
- Radiolucent
- Detachable upholstery enables easy cleaning and disinfection
- Integrated side rails (EU)

Art.-no. 63250\_2

L x W: 268 x 550 mm

Adjusting range: -35° / +50

Upholstery: Viscoelastic foam,  
H = 80 mm

Electrically conductive

Suitable for: 603200, 603300



#### Tripartite back rest

- Easy access to shoulder area by means of three detachable segments
- Docking and undocking at lower back rest
- Radiolucent
- Detachable upholsteries enable easy cleaning and disinfection
- Incl. head rest

Art.-no. 63390

L x W: 320 x 550 mm

Adjusting range: -35° / +50

Upholstery: Viscoelastic foam,  
H = 80 mm

Electrically conductive

Suitable for: 603100, 603200,  
603300

# Accessories for MOT6000S I



## Pelvis section extension

- Extension of pelvis section by 400 mm
- With cut-out
- Radiolucent
- Detachable upholstery enables easy cleaning and disinfection
- Integrated side rails (EU)

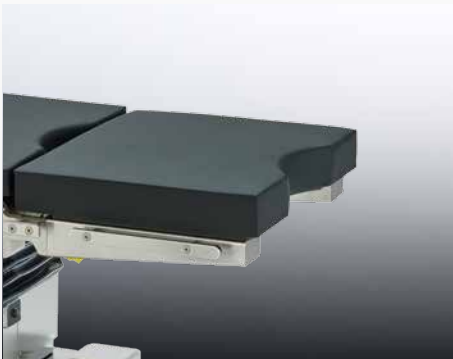
Art.-no. 63125\_1

L x W: 400 x 550 mm

Upholstery: Viscoelastic foam,  
H = 80 mm

Electrically conductive

Suitable for: 603100



## Pelvis section extension

- Extension of pelvis section by 400 mm
- With cut-out
- Radiolucent
- Detachable upholstery enables easy cleaning and disinfection
- Integrated side rails (EU)

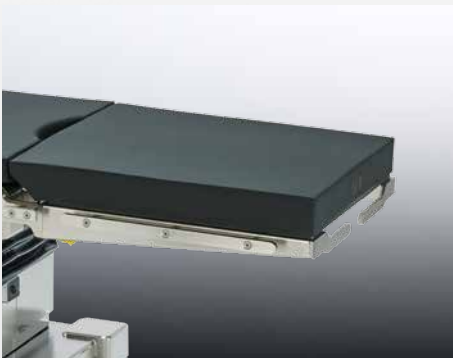
Art.-no. 63125\_2

L x W: 400 x 550 mm

Upholstery: Viscoelastic foam,  
H = 80 mm

Electrically conductive

Suitable for: 603200, 603300



## Leg rest

- Electrically adjustable
- Docking and undocking at pelvis section
- Radiolucent
- Detachable upholstery enables easy cleaning and disinfection
- Integrated side rails (EU)

Art.-no. 63625

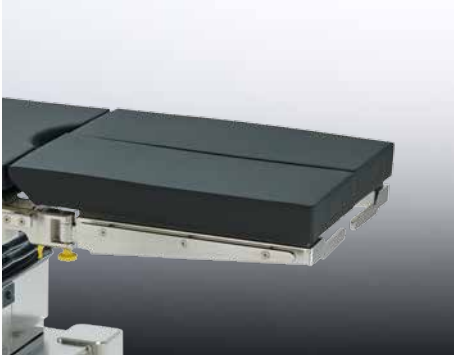
L x W: 660 x 550 mm

Adjusting range: -90° / +70°

Upholstery: Viscoelastic foam,  
H = 80 mm

Electrically conductive

Suitable for: 603200, 603300



#### **Divided leg rest**

- Easy adjustment by means of gas spring
- Swivelling
- Docking and undocking at pelvis section
- Radiolucent
- Detachable upholsteries enable easy cleaning and disinfection
- Integrated side rails (EU)
- Pair

Art.-no. 63615\_1

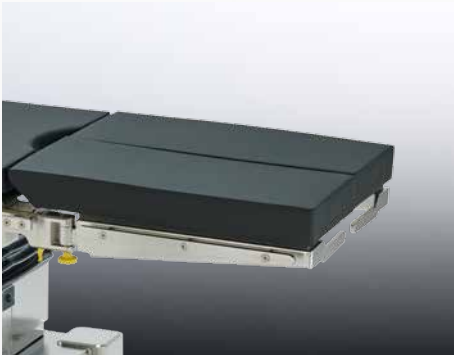
L x W: each 660 x 266 mm

Adjusting range: -90° / +30°

Upholstery: Viscoelastic foam,  
H = 80 mm

Electrically conductive

Suitable for: 603100



#### **Divided leg rest**

- Electrically adjustable
- Swivelling
- Docking and undocking at pelvis section
- Radiolucent
- Detachable upholsteries enable easy cleaning and disinfection
- Integrated side rails (EU)
- Pair

Art.-no. 63615\_2

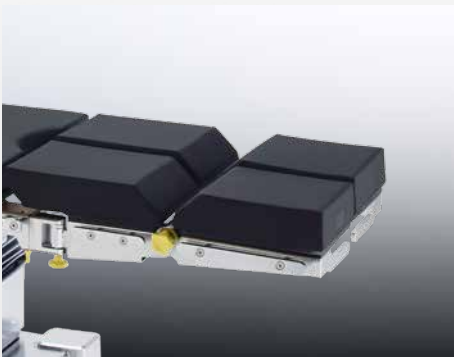
L x W: each 660 x 266 mm

Adjusting range: -90° / +80°

Upholstery: Viscoelastic foam,  
H = 80 mm

Electrically conductive

Suitable for: 603200, 603300



#### **Double divided leg rest**

- Electrically adjustable
- Swivelling and bendable
- Docking and undocking at pelvis section
- Detachable upholsteries enable easy cleaning and disinfection
- Integrated side rails (EU)
- Pair

Art.-no. 63660

L x W: each 662 x 266 mm

Adjusting range: -90° / +80°

Upholstery: Viscoelastic foam,  
H = 80 mm

Electrically conductive

Suitable for: 603200, 603300

# Accessories for MOT6000S I

Picture coming  
soon!

## Carbon positioning rest

- For intraoperative x-ray
- Optimal radiolucency (360°)
- Docking and undocking at pelvis section or lower back rest
- Incl. upholstery

Item in peperation and currently not available!

Art.-no. 63630

L x W: 900 x 540 mm

Upholstery: Viscoelastic foam,  
H= 80 mm

Suitable for: 603100, 603200,  
603300

## Transfer leg rest

- For short-time positioning of legs
- Docking and undocking at pelvis section

Item in peperation and currently not available!

Art.-no. 63635

L x W: 900 x 500 mm

Suitable for: 603100, 603200,  
603300

## Extension segments

- For extension of the OT-Table's lying surface
- Integrated side rails (EU)
- Pair

Art.-no. 61355SF

L x W: each 310 x 110 mm

Upholstery: Viscoelastic foam,  
H = 80 mm

Electrically conductive

Suitable for: 603100, 603200,  
603300





#### Foot switch

- Additional control unit to adjust the main functions height, lateral and Trendelenburg movement
- Tethered
- Cannot be retrofitted!

Art.-no. 634060

Suitable for: 603100, 603200, 603300

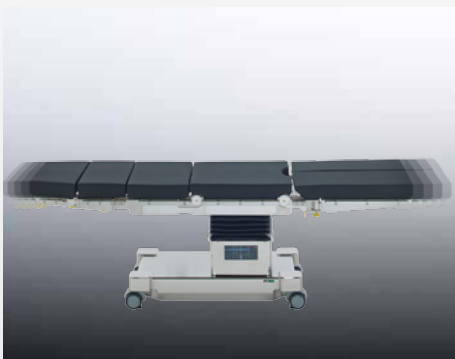


#### Infrared remote control

- Wireless data transfer
- Control panel for all electric functions of operating table
- Incl. charging station

Art.-no. 634070

Suitable for: 603100, 603200, 603300



#### Sliding

- Electric sliding of table top up to 400 mm
- Cannot be retrofitted!

Art.-no. 63640

Suitable for: 603200, 603300

# Accessories for MOT6000S I



## Back-up system

- System ensures the operability of operating table's basic functions (height, lateral, Trendelenburg and brakes) in case of electronic defect by means of 24V battery
- Cannot be retrofitted!

Art.-no. 63655

Suitable for: 603100, 603200, 603300



## Electronic drive

- Motorized fifth castor for manoeuvring and positioning of operating table
- Cannot be retrofitted!

Art.-no. 63646

Suitable for: 603100, 603200, 603300



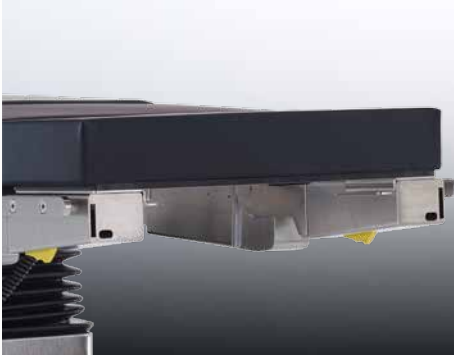
## Hand grips for electronic drive

- For manoeuvring and positioning of operating table by means of electronic drive at operating table's head end
- With integrated speed control
- Movement in forward and backward direction possible

Art.-no. 63570

Attachment at side rail (EU)

Suitable for: 63646



#### **Radiographic cassette tunnel**

- To insert radiographic cassette carrier

Art.-no. 63642\_1

Suitable for: 603100

#### **Radiographic cassette tunnel**

- To insert radiographic cassette carrier

Art.-no. 63642\_2

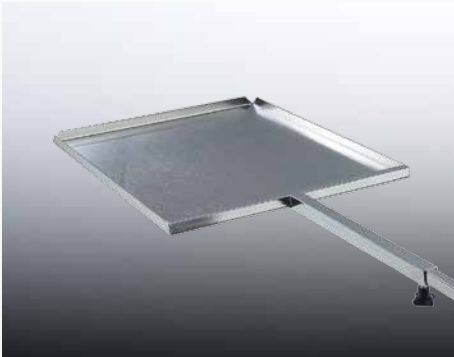
Suitable for: 603200

#### **Radiographic cassette tunnel**

- To insert radiographic cassette carrier

Art.-no. 63642\_3

Suitable for: 603300



#### **Radiographic cassette carrier**

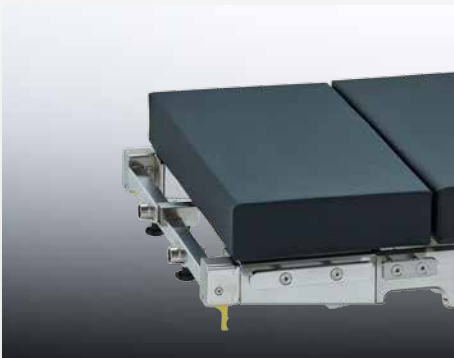
- To insert radiographic cassettes under table top of operating table
- With telescopic rod

Art.-no. 63643

L x W x H: 470 x 385 x 16 mm

Material: Stainless steel

Suitable for: 63642



#### **Universal adapter**

- For attachment of a variety of head positioning accessories and neurosurgical accessories

Art.-no. 63100

Suitable for: 603100, 603200, 603300

# Accessories for MOT6000S I



## Accessory trolley

- For central storage of accessories
- Five slots for storage of upholstery segments
- Five side rails (25 x 10 mm) for storage of further accessories
- One shelf for storage of small accessories

Art.-no. 341045\_3

L x W x H: 765 x 700 x 1670 mm

Four double swivel castors  
(two with brake)

Suitable for: Upholstery segments  
of series MOT6000S 1 as well as  
accessories for side rails (EU)

# General Accessories



## Clamp

- For fixation of accessories with round rod (18 mm)
- Rotatable

Art.-no. 61511

Attachment at side rail (EU)



## Clamp

- For fixation of accessories with round rod (18 mm)
- With quick lock and release lever
- Rotatable

Art.-no. 61512

Attachment at side rail (EU)



## Clamp

- For fixation of accessories with square rod (25 x 10 mm)

Art.-no. 61551

Attachment at side rail (EU)

# General Accessories



## Clamp

- For fixation of accessories with square rod (20 x 20 mm)

Art.-no. 61552

Attachment at side rail (EU)



## Clamp

- For fixation of accessories with round rod (18 mm)

Art.-no. 61553

Attachment at side rail (EU)

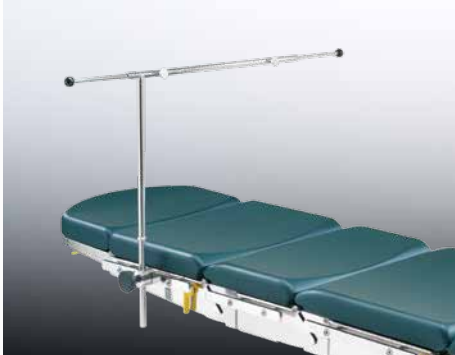


## Clamp

- For fixation of accessories with round rod (18 mm)
- With quick lock and release lever

Art.-no. 61554

Attachment at side rail (EU)



#### **Anaesthesia screen**

- Extendible to both sides
- Incl. clamp

Art.-no. 61750

Attachment at side rail (EU)



#### **Arm restraint cuff**

- For attachment at anaesthesia screen

Art.-no. 61755

Suitable for: 61750



#### **Flexible anaesthesia screen**

- Bendable
- Individual adjustable
- Incl. clamp

Art.-no. 61751

L: 2000 mm

Attachment at side rail (EU)



# General Accessories



## Tube support

- For fixation of breathing tube
- Bendable support is infinitely variable
- Adjustable in height
- Incl. clamp

Art.-no. 61752

Attachment at side rail (EU)



## Infusion holder

- Extendible
- Four hooks
- Incl. clamp

Art.-no. 61800

Attachment at side rail (EU)

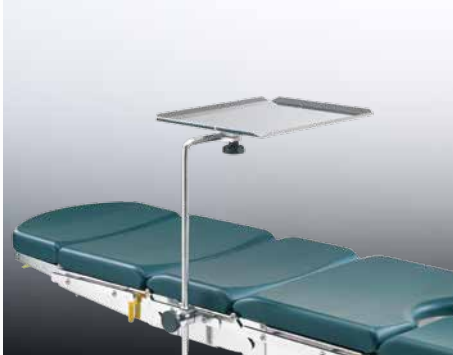


## Infusion holder

- Extendible
- Rotatable
- Four hooks
- Incl. rotatable clamp

Art.-no. 61805

Attachment at side rail (EU)



#### **Mayo table**

- Adjustable in height
- Rotatable
- Incl. clamp

Art.-no. 61410

L x W: 450 x 350 mm

Attachment at side rail (EU)



#### **Side rail extension**

- Extends side rail up to 320 mm
- For attachment of accessories at side rail (EU)
- Incl. clamp

Art.-no. 61560

Attachment at side rail (EU)



#### **Sliding handles**

- For easy and comfortable movement of operating table
- Incl. clamp
- Pair

Art.-no. 61571

Attachment at side rail (EU)

# General Accessories



## Side support

- Incl. clamp
- Pair

Art.-no. 61341

L x W: each 220 x 110 mm

Upholstery: PUR

Electrically conductive

Attachment at side rail (EU)



## Shoulder support

- Adjustable in height
- Extendible
- Incl. clamp
- Pair

Art.-no. 61351

L x W: each 220 x 110 mm

Upholstery: PUR

Electrically conductive

Attachment at side rail (EU)



## Double side support

- Support of pelvis section
- Adjustable in height
- Extendible
- Incl. clamp

Art.-no. 61362

Upholstery: PUR, Ø: 100 mm

Electrically conductive

Attachment at side rail (EU)



#### Holder

- For attachment of body supports
- Adjustable in height
- Extendible
- Swivelling (360°)
- Positioning of body supports by means of ball joint

Art.-no. 61361

Attachment at side rail (EU)



#### Joint arm

- For attachment of body supports
- Flexible positioning of body supports by means of three joints
- Quick lock and release of joint arm by means of central screw

Art.-no. 61365

Attachment at side rail (EU)



#### Body support

- To support pubis, sacrum and sternum

Art.-no. 61361\_1

Ø: 100 mm

Upholstery: PUR

Electrically conductive

Suitable for: 61361, 61365

# General Accessories



## Body support

- To support side and shoulder

Art.-no. 61361\_2

L x W: 220 x 110 mm

Upholstery: PUR

Electrically conductive

Suitable for: 61361, 61365



## Body support

- To support back and buttocks

Art.-no. 61361\_3

L x W: 220 x 110 mm

Upholstery: PUR

Electrically conductive

Suitable for: 61361, 61365



## Body support

- Supporting roll for lateral positioning of patient

Art.-no. 61361\_4

L x Ø: 190 x 100 mm

Upholstery: PUR

Electrically conductive

Suitable for: 61361, 61365



#### Instrument disposal

- Round form
- Swivelling
- Incl. clamp

Art.-no. 91611

Ø = 280 mm

Material: Stainless steel

Attachment at side rail (EU)



#### Instrument disposal

- Squared form
- Swivelling
- Incl. clamp

Art.-no. 91612

L x W x H: 325 x 265 x 65 mm

Material: Stainless steel

Attachment at side rail (EU)



#### Bowl with drainage and tube

- For the intake and drainage of fluids
- Swivelling
- Incl. clamp

Art.-no. 91613

Ø = 320 mm

Material (Bowl): Stainless steel

Attachment at side rail (EU)

# General Accessories



## **Bucket**

- With lid and tube-inlet

Art.-no. 91608

Volumen: 12 Liter

Material: Stainless Steel

Suitable for: 91613



## **Hand switch support**

- To place hand switch at lateral or head-sided side rail
- Tiltable

Art.-no. 61575

Material: Stainless steel

Attachment at side rail (EU)



# Head positioning

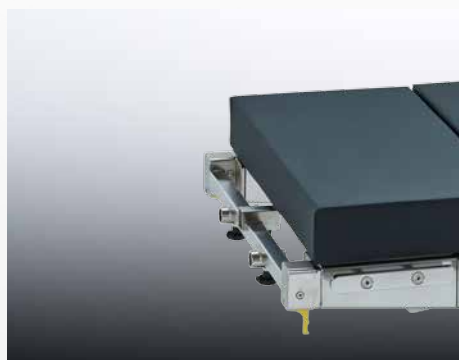


## Universal adapter

- For attachment of a variety of head positioning accessories and neurosurgical accessories

Art.-no. 61100

Suitable for: All models of series  
MAT5000 IV und MOT6000 III



## Universal adapter

- For attachment of a variety of head positioning accessories and neurosurgical accessories

Art.-no. 63100

Suitable for: 603100, 603200,  
603300



## Horseshoe shaped head rest

- For positioning head in prone or supine position
- Oval form with cut-out
- Tilttable and rotatable by means of ball joint
- Adjustable in height

Art.-no. 61114\_1

Upholstery: PUR

Electrically conductive

Attachment at 61100, 61385, 61390,  
63100 or 63390

# Head positioning



## Horseshoe shaped head rest

- For positioning head in supine position
- Rotatable and tiltable by means of ball joint
- Adjustable in height

Art.-no. 61114\_2

Upholstery: PUR

Electrically conductive

Attachment at 61100, 61385, 61390, 63100 or 63390



## Horseshoe shaped head rest

- For positioning head in prone or supine position
- Two-part
- Extendible in width
- Rotatable and tiltable by means of ball joint
- Incl. detachable upholsteries and fixture strap

Art.-no. 61114\_3

Upholstery: Viscoelastic foam

Electrically conductive

Attachment at 61100, 61385, 61390, 63100 or 63390



## Head rest

- Easy adjustment by means of gas spring
- Alternatively also available with viscoelastic foam upholstery, H= 80 mm (Art.-no. 61116SF)

Art.-no. 61116

L x W: 230 x 230 mm

Upholstery: PUR, H = 60 mm :

Electrically conductive

Attachment at 61100, 61385, 61390, 63100 or 63390



#### Head support

- For comfortable and safe positioning of patient's head during shoulder surgeries
- Attachment at tripartite back rest or universal adapter
- Extendible
- Incl. upholstery

Art.-no. 61395

Upholstery: Viscoelastic foam

Electrically conductive

Attachment at 61100, 61385, 61390, 63100 or 63390



#### Joint arm

- For attachment of head positioning accessories
- Flexible positioning of body supports by means of three joints
- Quick lock and release of joint arm by means of central screw

Art.-no. 61117

Attachment at 61100 or 63100



#### Head rest

- For comfortable and safe positioning of patient's head
- Alternatively also available with viscoelastic foam upholstery, H= 80 mm (Art.-no. 61116SF)

Art.-no. 61117\_1

L x W: 230 x 230 mm

Upholstery: PUR, H= 60 mm

Electrically conductive

Attachment at 61117

# Head positioning



## Head support

- For stable positioning and fixation of patient's head
- Incl. upholsteries and fixation strap

Art.-no. 61117\_2

Upholstery: Viscoelastic foam

Electrically conductive

Attachment at 61117



## Horseshoe shaped head rest

- For positioning head in prone or supine position
- Oval form
- With cut-out

Art.-no. 61117\_3

Upholstery: PUR

Electrically conductive

Attachment at 61117



## Horseshoe shaped head rest

- For positioning head in supine position

Art.-no. 61117\_4

Upholstery: PUR

Electrically conductive

Attachment at 61117



#### **Horseshoe shaped head rest**

- For positioning head in prone or supine position
- Two-part
- Extendible in width
- Incl. detachable upholsteries and fixture strap

Art.-no. 61117\_5

Upholstery: Viscoelastic foam

Electrically conductive

Attachment at 61117



#### **Wrist support ring**

- With connecting piece for horseshoe shaped head rest

Art.-no. 61111

Material: Stainless steel

Suitable for: 61114\_2



#### **Wrist support ring**

- With connecting piece for horseshoe shaped head rest

Art.-no. 61113

Material: Stainless steel

Suitable for: 61114\_1, 61114\_3, 61117\_3, 61117\_4, 61117\_5

# Arm positioning



## Arm rest

- Rotatable and tiltable by means of ball joint
- Adjustable in height
- Horizontally slidable
- Incl. clamp and fixture straps

Art.-no. 61211

L x W: 400 x 115 mm

Upholstery: PUR, H = 40 mm

Electrically conductive

Attachment at side rail (EU)



## Intraoperative arm positioner

- For positioning of patient's arm during shoulder surgeries in beach chair position
- Quick lock and release of joint arm by means of central screw
- Incl. clamp and fixture straps

Art.-no. 61216

L x W: 400 x 115 mm

Upholstery: PUR, H = 40 mm

Electrically conductive

Attachment at side rail (EU)



## Arm rest

- Three joints enable flexible positioning of patient's arm
- Quick lock and release of joint arm by means of central screw
- Incl. clamp and fixture straps

Art.-no. 61217

L x W: 400 x 115 mm

Upholstery: PUR, H = 40 mm

Electrically conductive

Attachment at side rail (EU)



#### Arm rest

- Rotatable by 360°, swivelling and tiltable by means of one-hand control
- Adjustable in height
- Incl. clamp and fixture straps

Art.-no. 61221

L x W: 600 x 165 mm

Upholstery: PUR, H = 60 mm

Electrically conductive

Attachment at side rail (EU)



#### Arm rest

- Rotatable by 360°, swivelling and tiltable by means of one-hand control
- Adjustable in height
- Detachable upholstery enables easy cleaning and disinfection
- Incl. clamp and fixture straps

Art.-no. 61222

L x W: 600 x 165 mm

Upholstery: Viscoelastic foam, H = 60 mm

Electrically conductive

Attachment at side rail (EU)



#### Arm rest

- Rotatable by 360°, swivelling and tiltable by means of one-hand control
- Adjustable in height
- Detachable upholstery enables easy cleaning and disinfection
- Incl. clamp and fixture straps

Art.-no. 61223

L x W: 450 x 165 mm

Upholstery: Viscoelastic foam, H = 60 mm

Electrically conductive

Attachment at side rail (EU)

# Arm positioning



## Arm rest

- Swivelling
- Incl. clamp and fixture strap

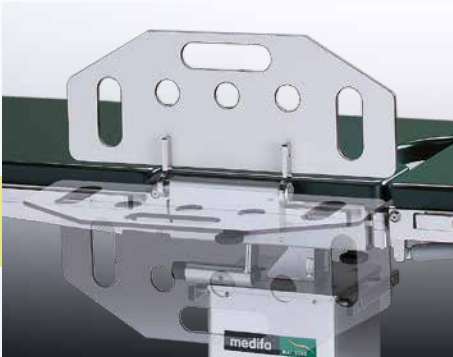
Art.-no. 61220

L x W: 600 x 165 mm

Upholstery: PUR, H = 60 mm

Electrically conductive

Attachment at side rail (EU)



## Side support / arm rest

- For stabilisation of patient or positioning of arm
- Hinged in three steps (upwards, horizontally, downwards)

Art.-no. 61092

L x H: 600 x 140 / 235 mm

Attachment at side rail (EU)



## Upholstery

- For side support / arm rest 61092

Art.-no. 56031

Upholstery: Artificial leather covered foam, H= 20 mm

Electrically conductive





**Hand cuffs**

- For fixation of hands or arms
- Incl. clamp
- Pair

Art.-no. 61400

L x W: each 180 x 80 mm

Attachment at side rail (EU)

# Leg positioning



## Leg rest according to Goepel

- For positioning patient in lithotomy position
- Piece

Art.-no. 61700

Upholstery: PUR

Electrically conductive

Attachment at side rail (EU)

Rotatable clamp (61511 or 61512) and fixture straps (B81600M1) to be ordered separately



## Leg rest according to Goepel Comfort

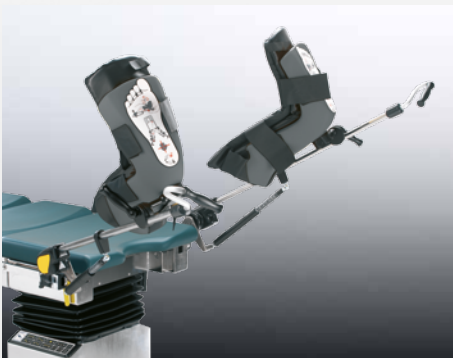
- For positioning patient in lithotomy position
- With grey foamed PUR knee bolsters
- Pair

Art.-no. 81705

Electrically conductive

Attachment at side rail (EU)

Rotatable clamp (61511 or 61512) and fixture straps (B81600M1) to be ordered separately



## Leg rest

- For positioning patient in lithotomy position
- Stepless positioning of legs
- Easy adjustment by means of gas spring supported one-hand control
- Incl. upholsteries and clamps
- Pair

Art.-no. 61720

Max. patient weight: 159 kg

Attachment at side rail (EU)



#### Leg rest

- Especially for the positioning of adipose patients in lithotomy position
- Tiltable by means of ball joint
- Incl. upholstery and fixture strap
- Pair

Art.-no. 61710

Upholstery: 300 x 285 x 155 / 100 mm

Electrically conductive

Attachment at side rail (EU)

Rotatable Clamp (61511 or 61512) to be ordered separately



#### Elbow support

- To support elbows of surgeon during procedures in lithotomy position
- Incl. clamp
- Pair

Art.-no. 61780

L x W: 145 x 120 mm

Upholstery: PUR

Electrically conductive

Attachment at side rail (EU)



#### Lower leg fixation

- Incl. clamp
- Piece

Art.-no. 61760

Upholstery: PUR

Electrically conductive

Attachment at side rail (EU)

# Leg positioning



## Thigh fixation

- Incl. clamp
- Piece

Art.-no. 61770

Upholstery: PUR

Electrically conductive

Attachment at side rail (EU)



## Rectal positioning device

- For positioning patient in knee-elbow position due to proctologic treatments or spinal surgery
- Adjustable in height (200 mm)
- Integrated side rails (EU)

Art.-no. 61632

L x W x H: 370 x 500 x 490 - 690 mm

Max. patient weight: 325 kg

Electrically conductive

Suitable for: All models of series MAT5000 IV and MOT6000 III



## Rectal positioning device

- For positioning patient in knee-elbow position due to proctologic treatments or spinal surgery
- Adjustable in height (200 mm)
- Integrated side rails (EU)

Art.-no. 63632

L x W x H: 370 x 500 x 490 - 690 mm

Max. patient weight: 325 kg

Electrically conductive

Suitable for: All models of series MOT6000S I



#### Knee supports

- For positioning patient in knee-elbow position due to proctologic treatments or spinal surgery
- Adjustable in height
- Swivelling
- Piece

Art.-no. 61150

Upholstery: PUR

Electrically conductive

Suitable for: All models of series MAT5000 IV and MOT6000 III



#### Rectoscopy roll

- Adjustable in height
- Incl. clamp

Art.-no. 61315

Upholstery: PUR

Electrically conductive

Attachment at side rail (EU)



#### Knee support

- For positioning patient in knee-elbow position due to proctologic treatments or spinal surgery
- Incl. clamp

Art.-no. 61630

L x W: 525 x 245 mm

Upholstery: PUR

Electrically conductive

Attachment at side rail (EU)

# Leg positioning



## Foot plates

- To stabilize patient in Anti-Trendelenburg position
- For extension of lying surface (foot plates can also be hinged down)
- Incl. clamps
- Pair

Art.-no. 61631

L x W: each 270 x 270 mm

Upholstery: PUR, H = 60 mm

Electrically conductive

Attachment at side rail (EU)



## Body and leg strap

- Steplessly adjustable
- Incl. clamp

Art.-no. 61405

L x W: 2300 x 80 mm

Attachment at side rail (EU)



## Leg strap

- For fixation of legs at divided leg rest
- Steplessly adjustable
- Pair

Art.-no. 61406

Suitable for: 61618, 61615, 61660, 63615\_1, 63615\_2, 63660\_1, 63660\_2



#### **Leg straps**

- For divided leg rests
- Incl. clamp
- Pair

Art.-no. 61407

L: each 1200 mm

Safety load: 454 kg  
(when using as pair)

Attachment at side rail (EU)

Suitable for: 61618, 61615, 61660,  
63615\_1, 63615\_2, 63660\_1,  
63660\_2

# Neurosurgery



## **DORO® Standard holder**

- For fixation of skull clamp or horseshoe headrest
- Adjustable with one hand
- Large adjustment radius
- Very low weight

Art.-no. 661065

Only in connection with 61100 or 63100



## **DORO® Swivel adapter**

- Connects standard holder (661065) with skull clamp (661069)
- Enables rotation adjustment of skull clamp

Art.-no. 661067

Suitable for: 661065, 661069, 661076 and 661078



## **DORO® Skull clamp**

- For fixation of head during neurosurgical procedures
- Locking mechanism enables quick and secure fixation

Art.-no. 661069

Only in connection with 661065 and 661067

Skull clamps (661073 and 661074) are not included in delivery!





#### **DORO® Skull pins adults**

- Can be sterilised
- For multiple uses
- Three pieces

Art.-no. 661073

Material: Stainless steel

Suitable for 661069

#### **DORO® Skull pins children**

- Can be sterilised
- For multiple uses
- Three pieces

Art.-no. 661074

Material: Stainless steel

Suitable for 661069



#### **DORO® Cross bar adapter**

- For secure fixation of head in seated position of patient
- Adaptable to the width of operating table
- Incl. clamps

Art.-no. 661071

Suitable for: 661065

Attachment at side rail (EU)



#### **DORO® Horseshoe headrest for adults**

- For positioning of head in prone or supine position
- Incl. detachable gel pads

Art.-no. 661076

Only in connection with 661065 and 661067

#### **DORO® Horseshoe headrest for children**

- For positioning of head in prone or supine position
- Incl. detachable gel pads

Art.-no. 661078

Only in connection with 661065 and 661067

# Orthopaedics and traumatology

## Extension device

- For attachment at operating table
- Levitating
- Max. patient weight:
  - Levitating: 136 kg
  - With supporting bars: 250 kg

### Included in delivery:

- Fixation adapter for operating table incl. pelvis part with upholstery
- Countertraction post for perineum and for neck of femur
- Two swivelling extension bars with double joints
- Two swivelling and height adjustable drawing spindles with adaption for extension shoe holders
- One trolley with storage basket for additional accessories
- Two height adjustable supporting bars



Art.-no. 63000\_1

Material: All metal parts made of stainless steel

Suitable for: All models of series MAT5000 IV and MOT6000 III

Alternatively also available with viscoelastic foam upholstery, H = 80 mm (Art.-no. 63000\_1SF)

Art.-no. 63000\_2

Material: All metal parts made of stainless steel

Suitable for: All models of series MOT6000S I





#### **Extension shoe for adults**

- For fixation of foot
- Piece

Art.-no. 61010

Suitable for: 63000\_1, 63000\_2



#### **Countertraction post for femur**

- For extension in lateral position
- Radiolucent perinneeal arc

Art.-no. 63025\_1

Upholstery: PUR

Suitable for: 63000\_1



#### **Countertraction post for tibia and fibula**

- For positioning and fixation of patient during surgeries at lower leg
- Radiolucent padded roll
- Adjustable in height
- Inclinal

Art.-no. 63045

Material: Metal parts made of stainless steel

Upholstery: PUR

Suitable for: 63000\_1, 63000\_2

# Orthopaedics and traumatology



## Pelvis plaster cast unit

- Usable for adults and children
- Slidable countertraction post

Art.-no. 63030

Material: Metal parts made of stainless steel

Upholstery: PUR

Suitable for: 63000\_1, 63000\_2



## Horseshoe holder „Kirschner“

- For extensions using Steinmann nails

Art.-no. 63060

Material: Stainless steel

Suitable for: 63000\_1, 63000\_2



## Leg support

- For positioning of healthy leg during extension
- Tiltable upholstery by means of ball joint
- Incl. fixture straps

Art.-no. 63026

Material: Metal parts made of stainless steel

Upholstery: PUR

Suitable for: 63000\_1, 63000\_2



#### Transfer leg rest

- For preoperative positioning of legs
- Incl. upholsteries (H= 35 mm)
- Pair

#### Transfer leg rest

- For preoperative positioning of legs
- Incl. upholsteries (H= 35 mm)
- Pair

Art.-no. 63070\_1

L x W: 600 x 200 mm

Suitable for: 63000\_1

Art.-no. 63070\_2

L x W: 600 x 200 mm

Suitable for: 63000\_2



#### Trolley for extension device

- For storage and transport of extension device and accessories

Art.-no. 63090

Material: Stainless steel

Suitable for: 63000\_1, 63000\_2

# Orthopaedics and traumatology



## Arm extension device

- For intramedullary nailing of humerus
- Radiolucent countertraction post
- Incl. tension rod, countertraction post and clamp

Art.-no. 62050

Attachment at side rail (EU)

Upholstery: PUR



## Weinberger hand cuff

- Secure fixation of hand and upper arm during intramedullary nailing of humerus
- Radiolucent
- Can be sterilised

Art.-no. 62055

Suitable for: 62050



## Upper arm support

- For positioning of upper arm
- Radiolucent
- Adjustable in height

Art.-no. 61226

L x W: 280 x 280 mm

Upholstery: Artificial leather covered foam, H = 30 mm

Electrically conductive

Attachment at side rail (EU)



#### Arm and hand surgical table

- Adjustable in height
- Levitating
- Radiolucent
- Incl. clamps and upholstery

Art.-no. 61231

L x W: 600 x 340 mm

Upholstery: Viscoelastic foam,  
H = 35 mm

Electrically conductive

Attachment at side rail (EU)



#### Arm and hand surgical table

- Adjustable in height
- Radiolucent
- With tunnel for radiographic cassette carrier
- Incl. clamp, supporting leg and upholstery

Art.-no. 61232

L x W: 645 x 295 mm

Upholstery: Artificial leather covered  
foam, H = 25 mm

Electrically conductive

Attachment at side rail (EU)



#### Arm and hand surgical table

- Table top made of carbon
- Radiolucent
- Adjustable in height
- Incl. clamp, upholstery and supporting leg

Art.-no. 56230

L x W: 815 x 430 mm

Upholstery: Viscoelastic foam,  
H = 30 mm

Electrically conductive

Attachment at side rail (EU)

# Orthopaedics and traumatology



## **Meniscotomy roll**

- Adjustable in height
- Incl. clamp

Art.-no. 61330

Upholstery: PUR

Electrically conductive

Attachment at side rail (EU)



## **Arthroscopic leg holder system**

- For fixation of thigh
- Horizontally and vertically adjustable
- Width of leg holder adjustable in three steps
- Incl. upholstery, clamp and fixture strap

Art.-no. 61328

Upholstery: Artificial leather covered foam

Electrically conductive

Attachment at side rail (EU)





### **Knee positioning device**

- Electrically adjustable by means of foot switch
- Intraoperative flexion and extension of knee
- Fixation of thigh
- Width of leg holder adjustable in three steps
- Suitable for different leg lengths
- Incl. upholstery, clamps and fixture strap

Art.-no. 61327

Tilt angle: 0° - 60°

Upholstery: Artificial leather covered foam

Electrically conductive

Attachment at side rail (EU)

Power supply: 230 V

Battery: 24 V, 1.2 Ah

# Positioning aids



## Head support

- For positioning of patient in supine position
- Protects from positioning injuries

Art.-no. 61147

L x W: 250 x 250 mm

Material: PUR

Electrically conductive



## Head ring

- For positioning of patient in supine position
- Protects from positioning injuries

Art.-no. 61115

H: 45 mm

Ø (inner): 75 mm

Ø (outer): 200 mm

Material: Silicone gel



## Head positioning pad adults

- For positioning of patient in prone position
- Protects from positioning injuries

Art.-no. 61910

L x W x H: 280 x 240 x 150 mm

Material: Silicone gel

## Head positioning pad children

- For positioning of patient in prone position
- Protects from positioning injuries

Art.-no. 61911

L x W x H: 260 x 230 x 140 mm

Material: Silicone gel



#### **Head positioning pad**

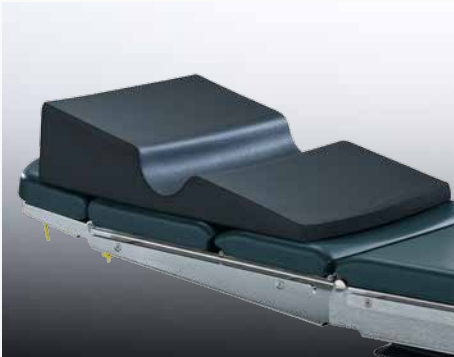
- For positioning patient in supine position
- Protects from positioning injuries

Art.-no. 61905

L x W x H: 400 x 500 x 100 mm

Material: Artificial leather covered foam

Electrically conductive



#### **Lateral positioning pad**

- For stable positioning during hip, shoulder or kidney surgeries
- Cut-out to relieve pressure from shoulder joint and upper arm
- Protects from positioning injuries

Art.-no. 61915

L x W x H: 700 x 500 x 160 / 25 mm

Material: PU coated foam

Electrically conductive



#### **Spinal disc pad**

- For positioning during surgeries at spinal disc
- Radiolucent

Art.-no. 61900

L x W x H: 820 x 450 x 90 mm

Material: Viscoelastic foam

Electrically conductive

# Positioning aids



## **Flat bottom chest roll large**

- Protects from positioning injuries at legs or chest

Art.-no. 61922

L x W x H: 510 x 100 x 75 mm

Material: Silicone gel



## **Flat bottom chest roll medium**

- Protects from positioning injuries at legs or chest

Art.-no. 61921

L x W x H: 405 x 100 x 75 mm

Material: Silicone gel



## **Flat bottom chest roll small**

- Protects from positioning injuries at legs or chest

Art.-no. 61920

L x W x H: 305 x 100 x 75 mm

Material: Silicone gel



#### **Bottom roll children**

- For positioning of patient in supine position
- Protects from positioning injuries at legs or feet

Art.-no. 61926

L x W x H: 500 x 150 x 75 mm

Material: Artificial leather covered foam

Electrically conductive



#### **Bottom roll adults**

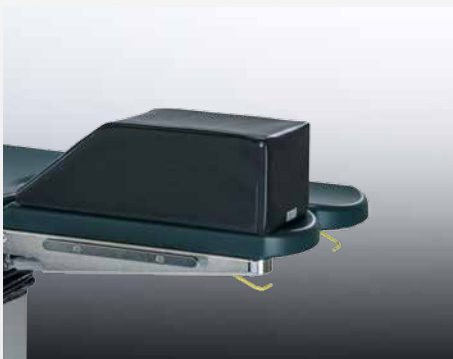
- For positioning of patient in supine position
- Protects from positioning injuries at legs or feet

Art.-no. 61925

L x W x H: 500 x 220 x 110 mm

Material: Artificial leather covered foam

Electrically conductive



#### **Foot positioning pad**

- Protects from positioning injuries at legs

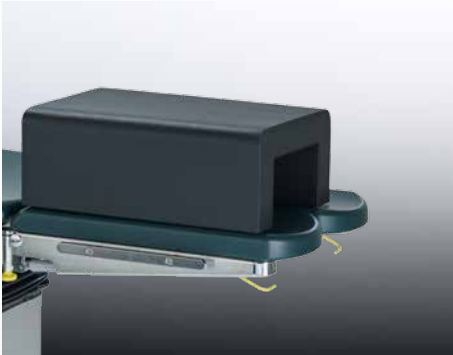
Art.-no. 61930

L x W x H: 600 x 220 x 180 mm

Material: Artificial leather covered foam

Electrically conductive

# Positioning aids



## Leg positioning tunnel

- For positioning patient in lateral position
- Protects from positioning injuries at leg
- Radiolucent

Art.-no. 61935

L x W x H: 600 x 390 x 220 mm

Material: PU coated foam

Electrically conductive



## Heel pads

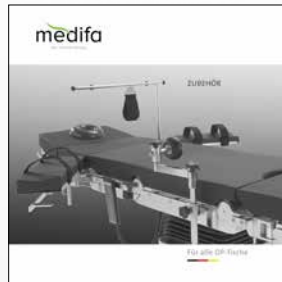
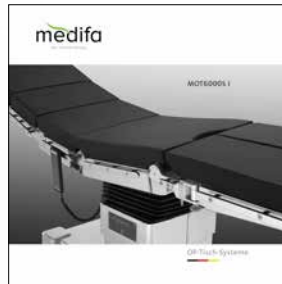
- For positioning patient in supine position
- Protects from positioning injuries at heels
- Pair

Art.-no. 61940

L x W x H: 190 x 100 x 70 mm

Material: Silicone gel

## Our full range of products:







medifa-hesse GmbH & Co. KG  
Industriestrasse 5  
57413 Finnentrop

fon +49 2721 71 77 -0  
fax +49 2721 71 77 -15

[www.medifa.com](http://www.medifa.com)  
[info@medifa.com](mailto:info@medifa.com)



Version 0001-16-EN  
Data subject to change without notice.

Made in Germany

